

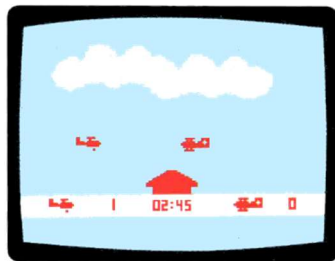
Each player's tank and score is shown at the top of the television screen, left to right. They are players #1 through #4, respectively.

HAND CONTROLS

Joy Stick . . . Push — FORWARD
 Pull — BACKWARD
 Push Right — turn CLOCKWISE
 Push Left — turn COUNTER-CLOCKWISE
Knob No function
Trigger Shoots

MANUFACTURED BY:
Bally Consumer Products Division
Bally Manufacturing Corporation
10750 W. Grand Avenue
Franklin Park, IL 60131

Bally[®] PROFESSIONAL videocade™ 2003



RED BARON



PANZER ATTACK

**VIDEOCADE 2003
RED BARON / PANZER ATTACK
OPERATING INSTRUCTIONS**

RED BARON (2 players)

Insert Videcade 2003 into your Bally Professional Arcade and press the Reset button to get the game selection displayed on your television screen.

Press (1) on the keypad to play RED BARON. The Bally Professional Arcade will ask you to:

"ENTER GAME TIME"

Using the keypad:

| | | |
|-------|-------------|----------------------------|
| Enter | (9) (=) | Play 9 seconds |
| Enter | (9) (9) (=) | Play 99 seconds |
| Enter | (9) (9) (9) | Play 9 min. and 99 seconds |

RED BARON is a two player game so you will be using hand controls: #1 (left side) and #2 (right side).

HAND CONTROLS

Joy Stick . . . Player #1: Pull back to go counter-clockwise,
push forward to go clockwise.
Player #2: Pull back to go clockwise, push forward to go counter-clockwise.

Knob Controls speed
Trigger Shoots

PANZER ATTACK (2 to 4 players)

Press (2) on the keypad to play PANZER ATTACK. The Professional Arcade will ask you to:

**"ENTER # OF PLAYERS"
(Press 2, 3 or 4)**

The Professional Arcade will then ask you to:

"ENTER # OF GAMES"

When you play less than 10 games you must enter (=) to start play.