

ColecoVision Composite Video Mod Installation

Please read this guide over completely before starting. If you have doubts about your abilities to complete this ask someone for help.

To get started you need to remove the 8 screws from the bottom of the console using a Phillips head screwdriver. The top and bottom halves of the ColecoVision case can easily be separated by prying the face plate away from the bottom section, there is no need to remove the silver sticker on the face plate.

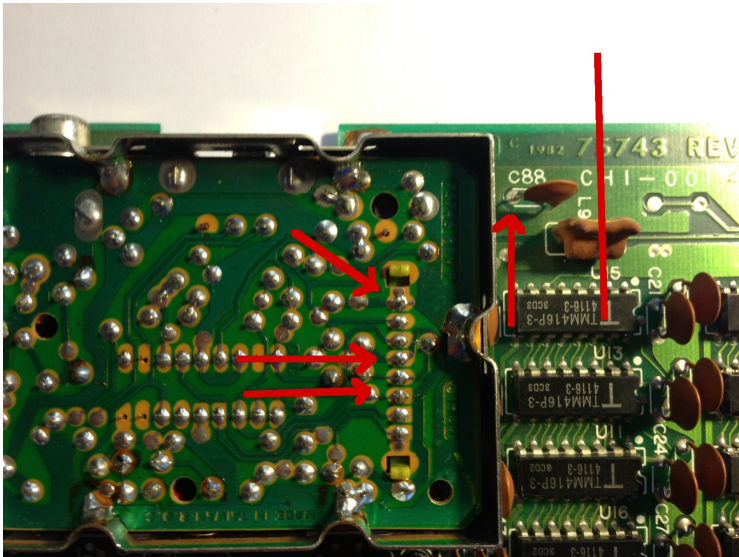
Once you have console open there are 2 screws that need to be removed and a solder spot near the power switch.

This guide assumes that you have some decent tinkering and soldering skills and basic hand tools. You'll need the following.

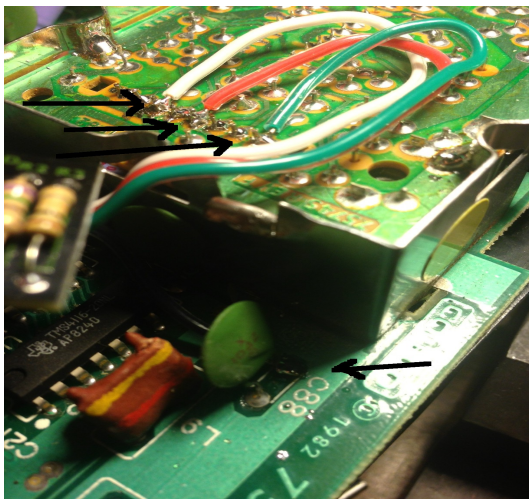
- Phillips head screwdriver
- variable speed drill motor
- 9/32" drill
- tin snips
- wire strippers (or utility knife to strip wire)
- side cut pliers
- pliers
- solder vacuum, desoldering bulb, or desoldering braid
- soldering iron
- solder
- safety glasses
- anti-static wrist band

Allow yourself a good tabletop surface to perform the work. Be sure that static electricity isn't going to be an issue. Static electricity can fry the mod board or your ColecoVision. It is always a good idea to wear an anti-static wrist band.

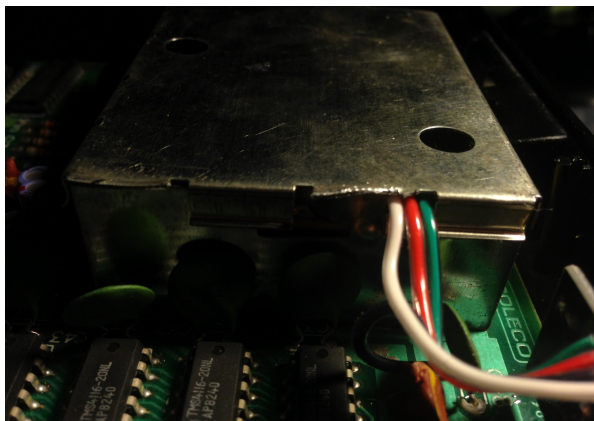
1. There is a row of 8 pins on the left side of the RF module Pin#1 at the top and Pin#8 at the bottom. Arrows show solder points for the 4 wires. Solder the green wire to Pin#1, Red wire to Pin#4, White wire to Pin#6 and the Black wire to the leg on C88. The straight line passing through L9 is a reference for positioning drill hole.



2. This picture shows wires soldered in place. Cut a notch in the side of the RF box for the wires to pass through.



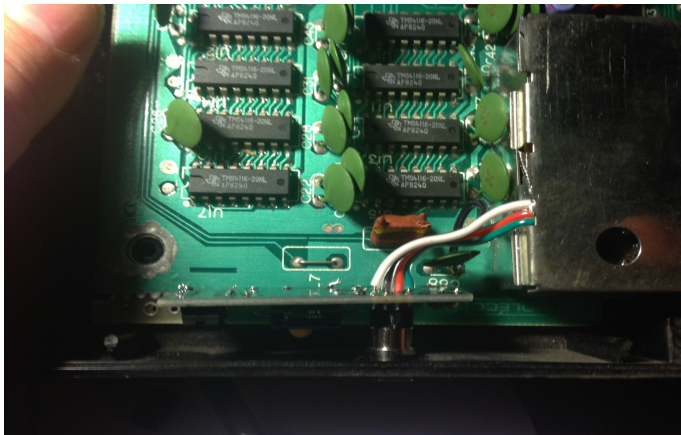
3. Cut notch in RF box lid so that wires do not get pinched.



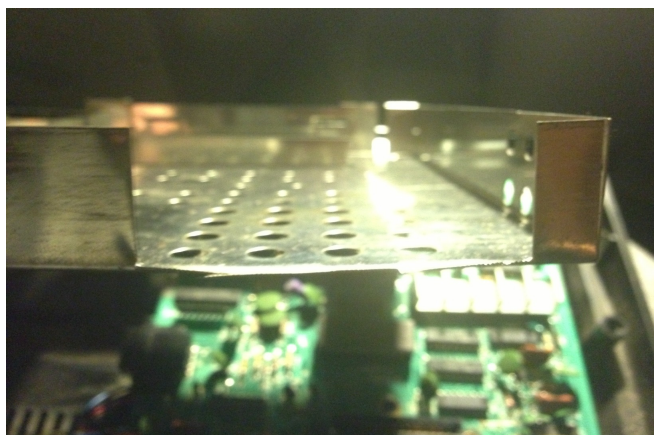
4. Use the location of inductor at position L9 (reference line in first picture) for positioning the drill hole left to right. Locate the middle between the bottom edge of the console and the top edge. Drill the hole in the center or slightly above center. Drill carefully at low speed applying moderate pressure, being careful not to allow drill to damage components. You may want to start the hole and completely remove the board from the case.



5. After you have you have the hole drilled put the jack through the hole and tighten the nut. Hold onto the body of jack, not the board when tightening the nut. This picture shows the module in place.



6. Cut away a section of the top half of the metal shielding. Make sure that opening is cut large enough that the shielding does not make contact with the mod board.



7. This picture shows the shielding installed.

