

LYNX-I LCD Replacement MOD REV1.0

Quick Guide

ATTENTION ! Installing the LCD replacement is on your own risk! Your LYNX-I could be damaged, if you are not able to do this modification!

Liability impossible!

Required materials:

LYNX-kit, VGA connector with screws, 4 plastic screws, 11 wires round about 12 cm (5 inches), 8 small wires (2 cm)

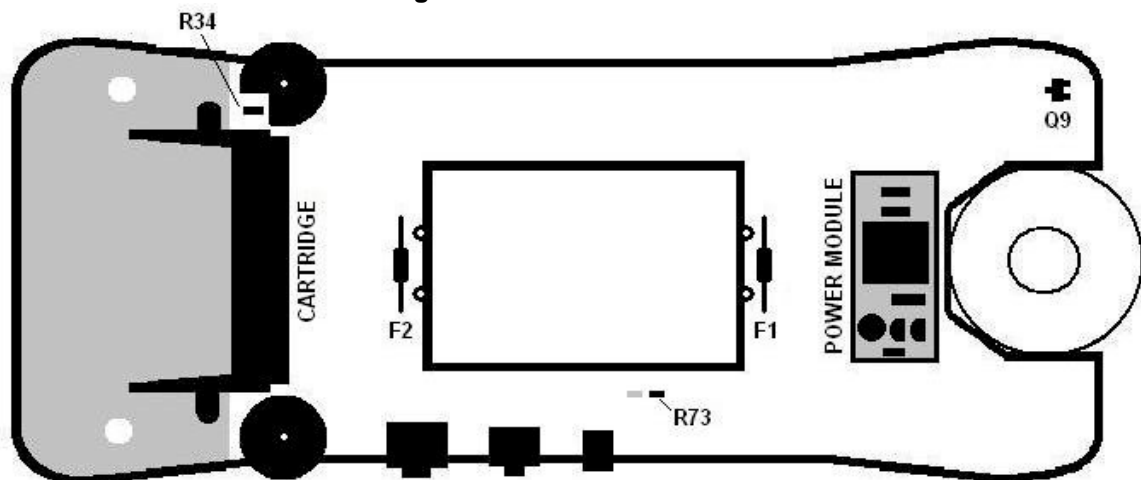
1. Step: Remove not needed Parts and 5 Volt check



ATTENTION ! Make sure that all power is **off**. Disconnect **ALL** cables.
NOTE: the copper plane of the LYNX-I PCB is **NOT** GND, but 5 Volt !!!

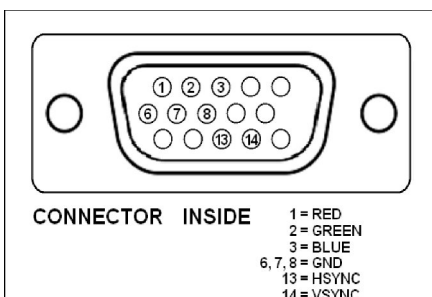
1. Remove **POWER MODULE**
2. Remove **Q9** transistor and **R73** resistor !!!
3. Replace **R34** resistor with 0 Ohm or bridge
4. Remove **LCD**; pull off the FPC **carefully** from the PCB like tape
5. Remove **F1** and **F2** fuses and **CFL lamp**
(see picture below)

!!! Now check the 5 Volt with a voltmeter on **VCC point** (see 3rd step). If the voltage exceeds 5.45 Volt, repair your LYNX ! Otherwise the LYNX mod will be **damaged** !!!

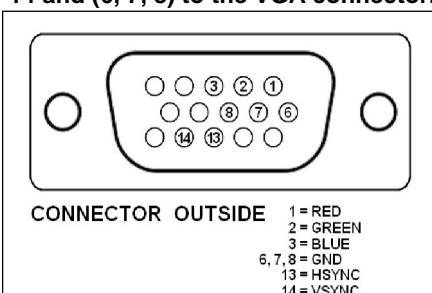


COPYRIGHT McWill 2014 - 2015

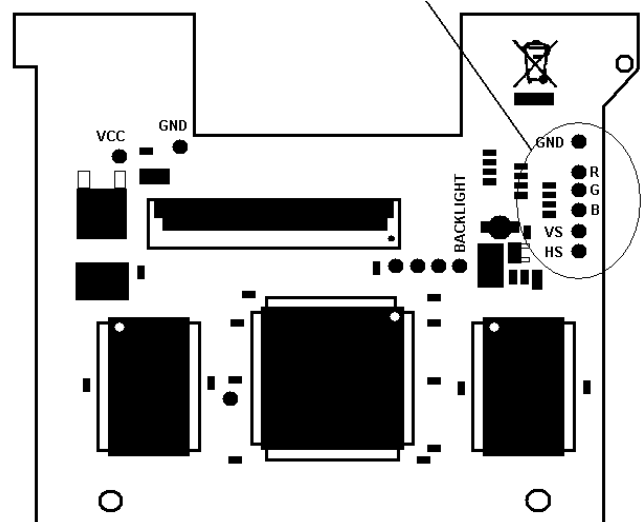
2. Step: VGA connector (if needed)



Connect the pins 6, 7 and 8 together.
Solder 6 wires to the pins 1, 2, 3, 13, 14 and (6, 7, 8) to the VGA connector.



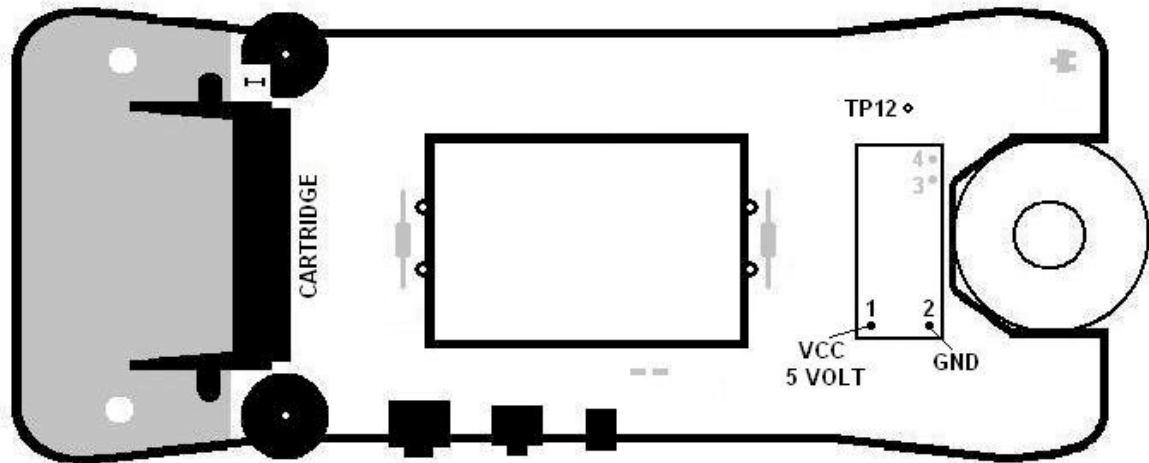
After that you solder the other side of the wires to the LYNX mod.



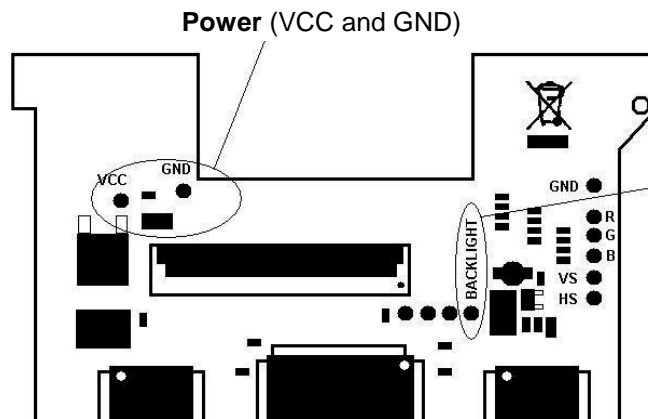
!! Use hot glue for the internal screws of VGA connector. Otherwise the screws may cause short circuit !!

3. Step: Power and backlight button

Now solder one wire to **VCC** (+5 Volt) and one wire to **GND** (Ground).



COPYRIGHT McWill 2014 - 2015



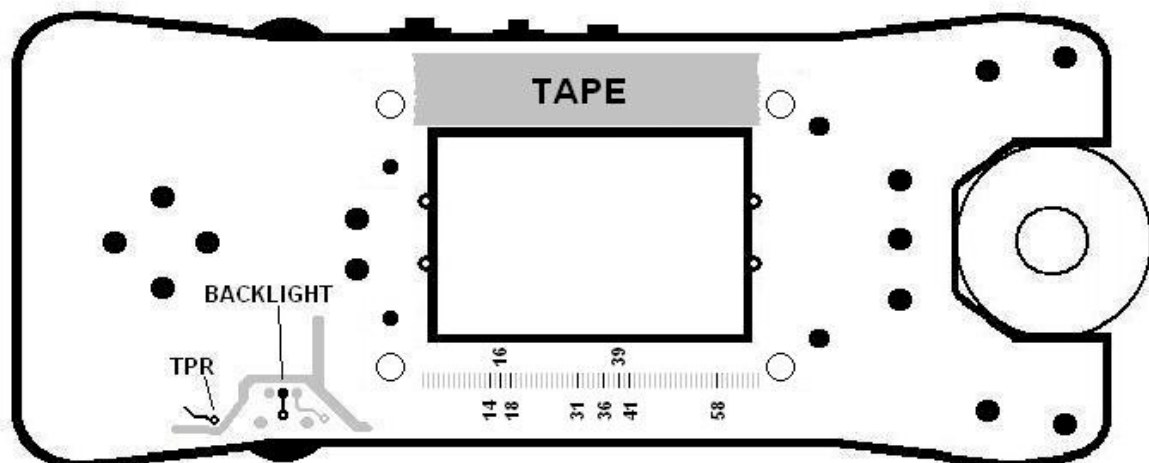
!!! ATTENTION !!!

Don't damage the flexcable (FPC) of the LCD !
You may disconnect the FPC, but don't forget connecting it correct after soldering **GND**.

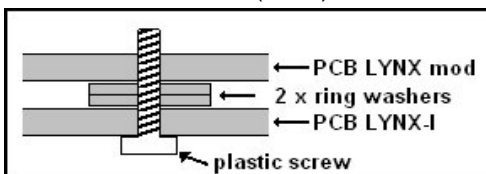
Backlight button - pin number 4 on the right
!!! If you **DON'T** want to install the **VGA** connector, you can leave the wire of the backlight !!!

Also solder one wire from VCC (5 Volt) to TP12.
Now use tape as illustrated below to prevent short circuit between LYNX and FPC of LCD.

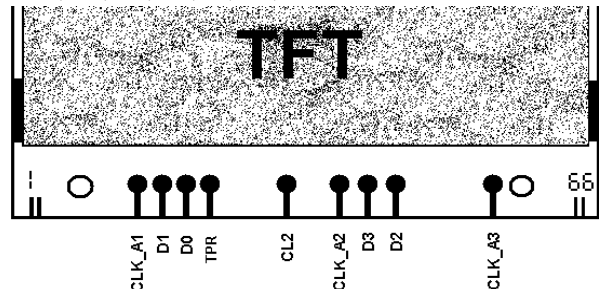
4. Step: Soldering data lines



Solder 8 small wires (2 cm) to the **LYNX PCB** at pin **14, 16, 18, 31, 36, 39, 41** and **58**.



Now use the white plastic of the old LCD to make 8 ring washers. Take the 4 screws and fix the LYNX mod to the LYNX PCB. Adjust the LYNX mod exactly!



Then solder these 8 wires from the LYNX to the LYNX mod. The last 2 wires are TPR and backlight.

!!! At last check all connections again !!!

If you made everything correct, you'll love it!

!!! 3.5" LCD / VGA selection: Backlight low (left) = VGA; Backlight high (right) = LCD !!!