

LYNX-II LCD Replacement MOD REV1.2

Quick Guide

ATTENTION ! Installing the LCD replacement is on your own risk! Your LYNX-II could be damaged, if you are not able to do this modification!

Liability impossible!

Required materials:

LYNX-kit, VGA connector with screws, 18 wires round about 20 cm (8 inches) length (IDE cable)

1. Step: Remove not needed Parts and 5 Volt check

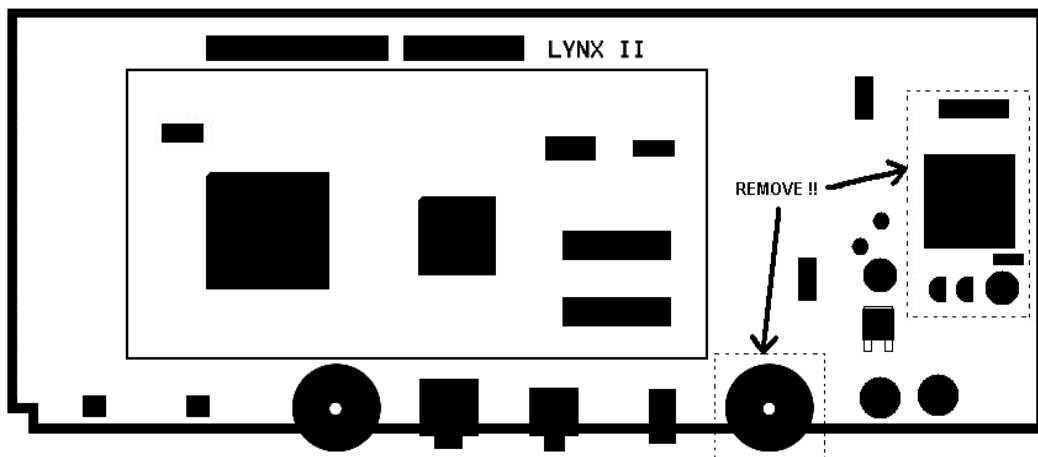


ATTENTION ! Make sure that all power is **off**. Disconnect **ALL** cables.

1. Remove **VR1** trim potentiometer (if VGA connector is needed)
2. Remove **L17** coil
3. Remove **Q13** and **Q14** transistors
4. Remove **C55** and **C56** capacitors
5. Remove **T1** power module

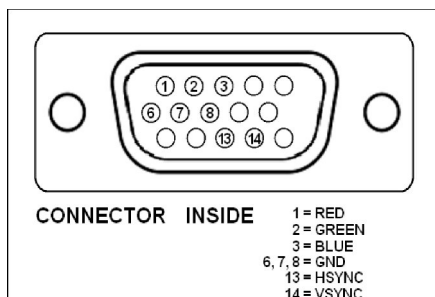
(see picture below)

!!! Now check the 5 Volt with a voltmeter on **VCC point** (see 3rd step). If the voltage exceeds 5.45 Volt, repair your LYNX ! Otherwise the LYNX mod will be **damaged** !!!

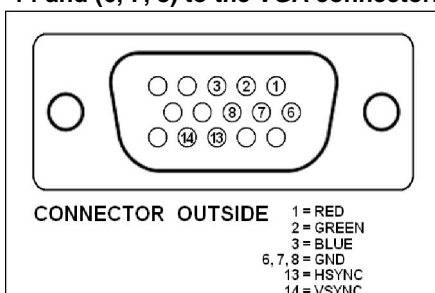


COPYRIGHT McWill 2014 - 2015

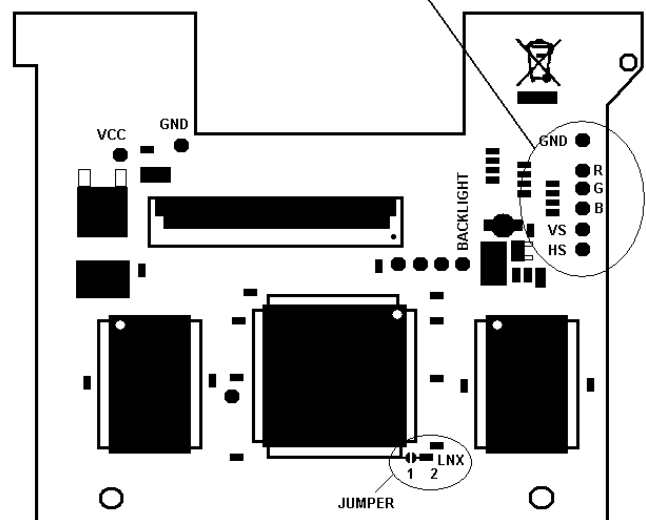
2. Step: VGA connector (if needed)



Connect the pins 6, 7 and 8 together.
Solder 6 wires to the pins 1, 2, 3, 13, 14 and (6, 7, 8) to the VGA connector.



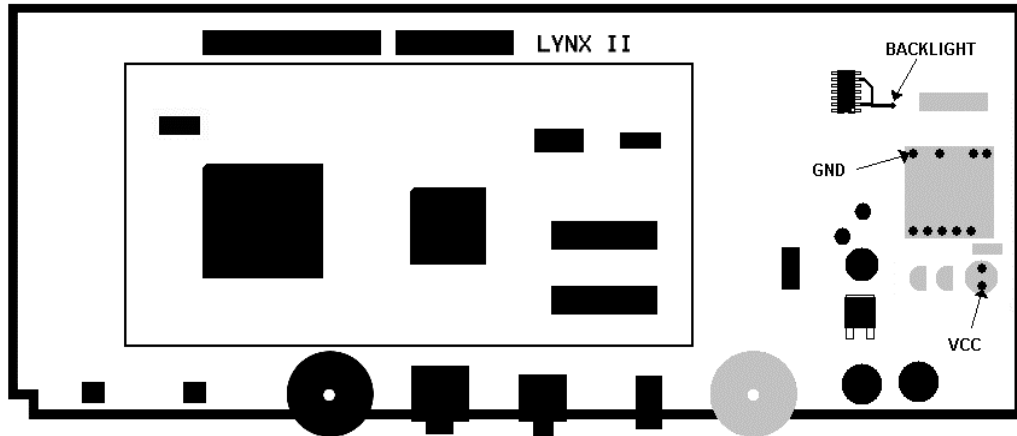
After that you solder the other side of the wires to the LYNX mod.



!! Use hot glue for the internal screws of VGA connector. Otherwise the screws may cause short circuit !!

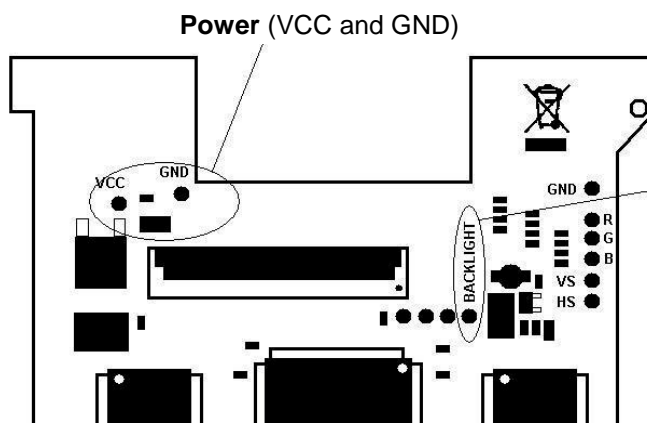
3. Step: Power and backlight button

Now solder one wire to **VCC** (+5 Volt) and one wire to **GND** (Ground).



COPYRIGHT McWill 2014 - 2015

The wire of the **backlight** has to be soldered to **U11** (74HC74A) on **pin 2**.



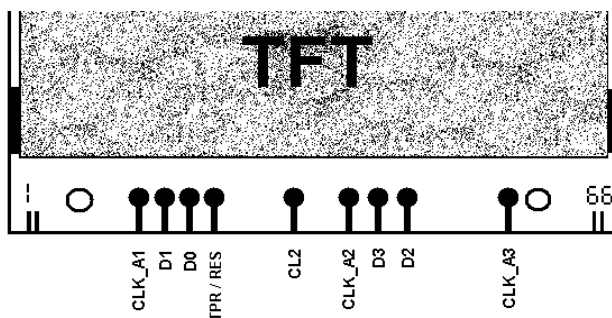
!!! If you DON'T want to install the VGA connector, you can leave the wire of the backlight !!!

Backlight button - pin number 4 on the right

!!! ATTENTION !!!

Don't damage the flexcable (FPC) of the LCD !
You may disconnect the FPC, but don't forget connecting it correct after soldering **GND**.

4. Step: Soldering data lines



LYNX-II mod. After that solder the other side of the wires to the **LYNX-II**.

You can use **RES** or **TPR**, not both together !

For LYNX-II with chipset 1 (**C104129-001**) you have to use **TPR** (testpoint 27) only.

For using **TPR** jumper is **closed**, for using **RES** jumper is **open** !

Last step is to solder the last 9 wires. Above you can see the **LYNX-II mod** and on the picture below you can see the **LYNX-II**. First solder all 9 wires to the

!!! At last check all connections again !!!

If you made everything correct, you'll love it!

