

## How to use FlashAir™ drive (WebDAV)

FlashAir™ drive allows you to view and copy files on the FlashAir™ card to your computer using File Explorer/Finder via wireless LAN. You can select and save some of or all of your photos or files at a time into your computer as you want.

\*This function is available on the FlashAir™ W-03 only.

### How to set up and use

↓ Windows®

↓ Mac OS

For Windows®

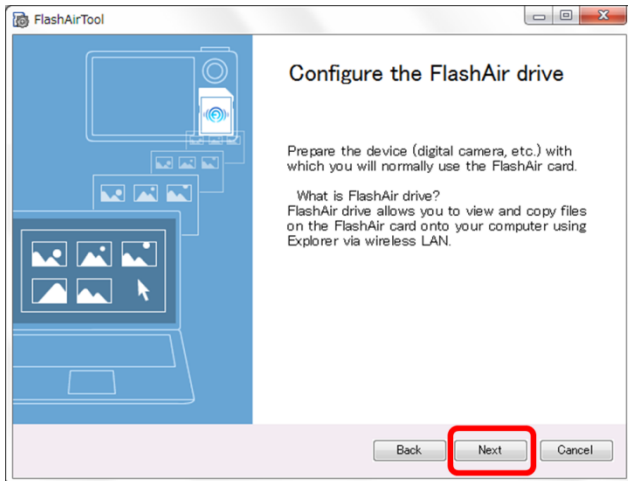
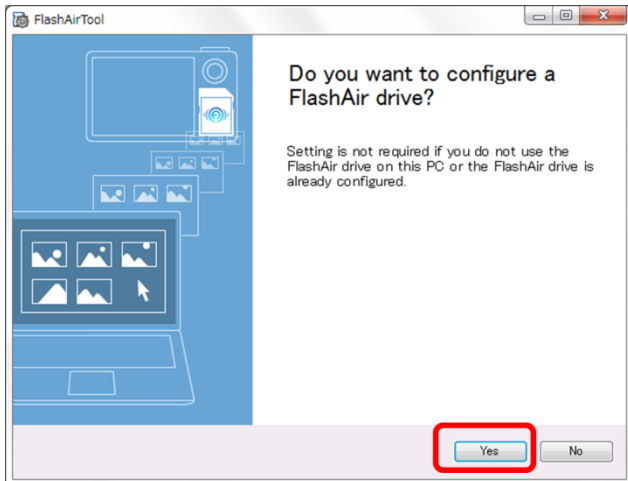
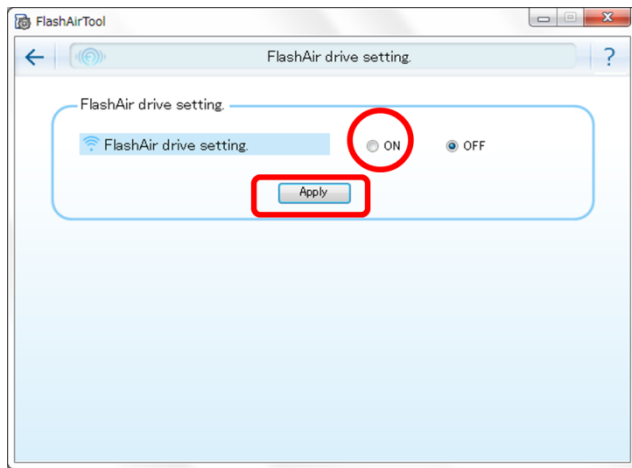
#### Step1

Insert the FlashAir™ into a SD memory card slot of your computer and open the FlashAir™ configuration software (Ver.3.00 or later). Then, click “FlashAir drive setting”.



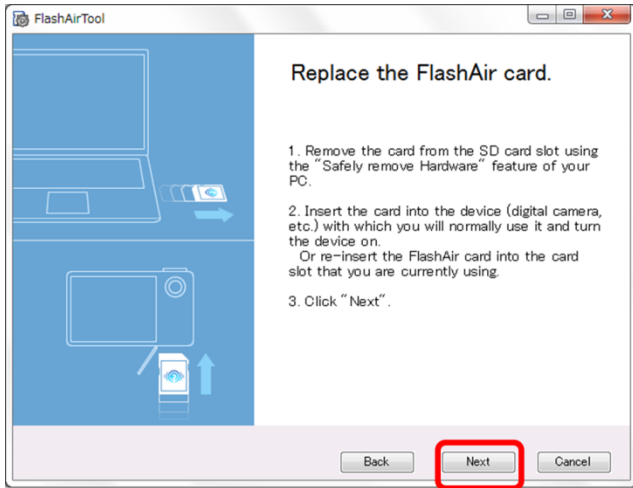
#### Step2

Check “ON” of “FlashAir drive setting”, and click “Apply”. Follow the on-screen instructions.

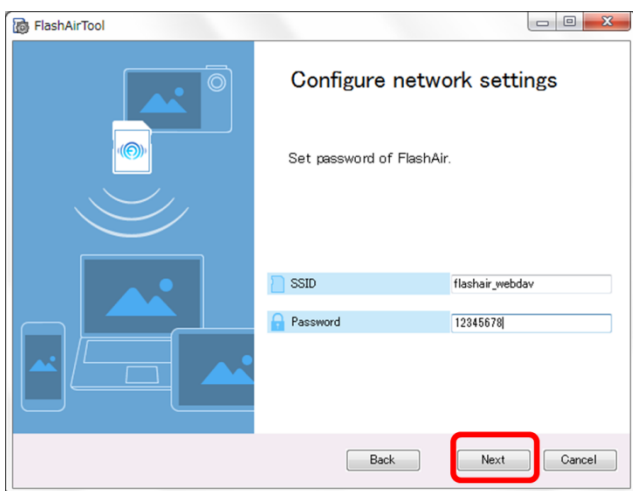


### Step3

When the following window appears, click "Safely Remove Hardware" of your computer and remove the FlashAir™. Then insert the FlashAir™ into your device (digital camera, etc.) in which you normally use the FlashAir™. Then, power on the device.



Depending on your network environment, the following window may appear. If the following window appears, type in the SSID and password for the FlashAir™.



#### Step4

After the setting is completed, a shortcut icon to the FlashAir™ drive appears on the desktop of your computer.

\*Setting FlashAir™ drive may take a few minutes.

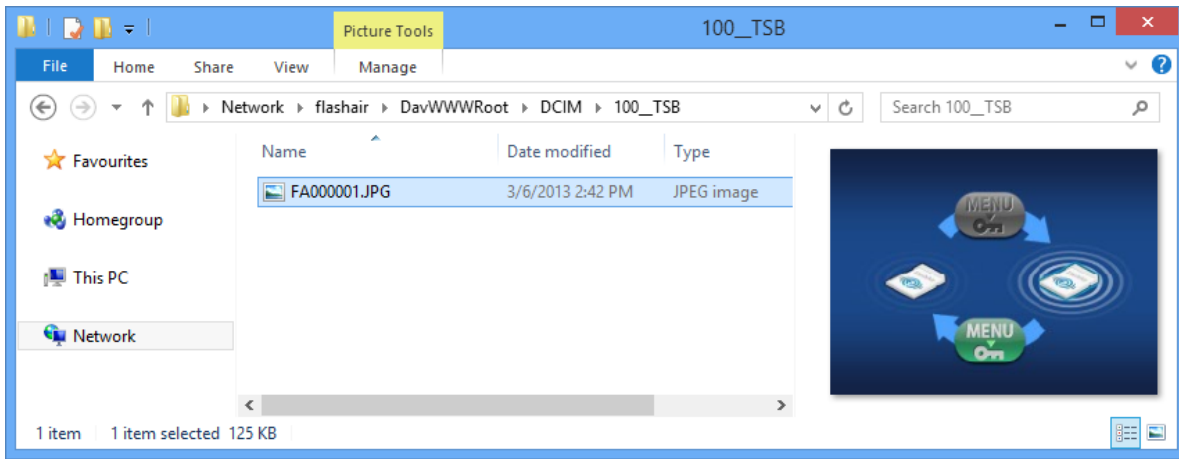


#### Step5

A double-click on the shortcut icon on the desktop opens File Explorer and brings up FlashAir™ on the Network folder.

To save photos or files into your computer, select the files you want , then drag and drop them into your computer.

\*You cannot save or delete the files on the FlashAir™ using FlashAir™ drive function from your computer.



For Mac OS

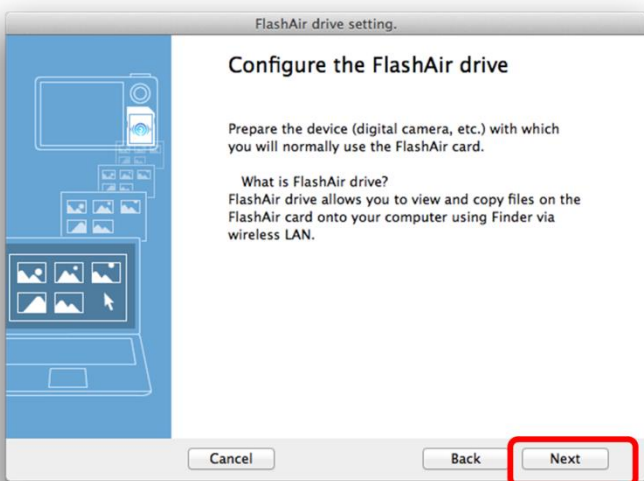
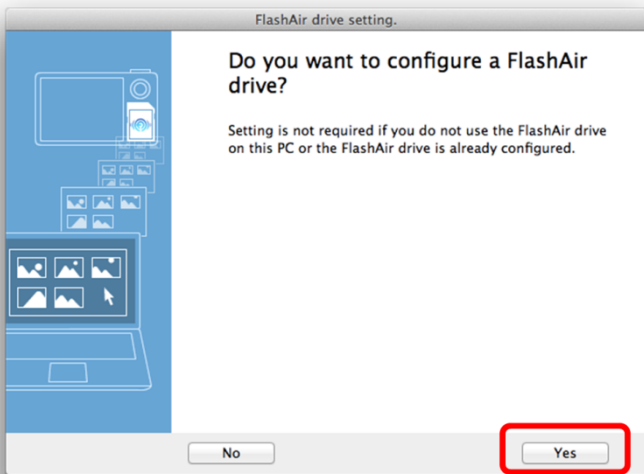
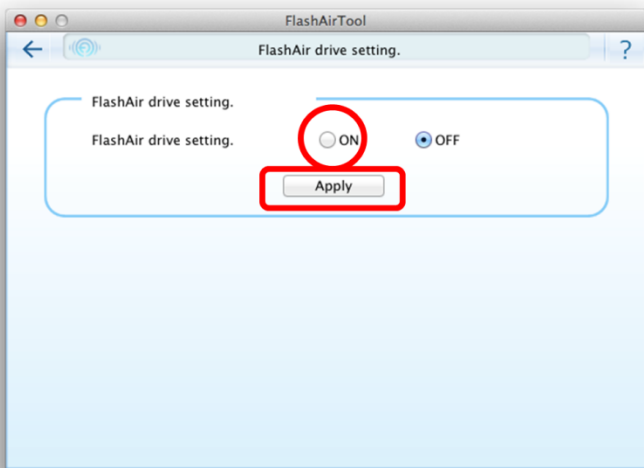
### Step1

Insert the FlashAir™ into a SD memory card slot of your computer and open the FlashAir™ configuration software (Ver.3.00 or later). Then, click “FlashAir drive setting”.



### Step2

Check “ON” of “FlashAir drive setting”, and click “Apply”. Follow the on-screen instructions.



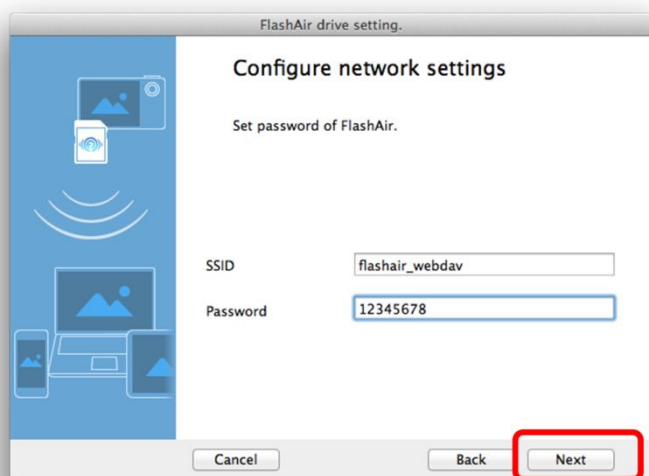
### Step3

When the following window appears, remove the FlashAir™ from your computer. Then insert the

FlashAir™ into your device (digital camera, etc.) in which you normally use the FlashAir™. Then, power on the device.



Depending on your network environment, the following window may appear. If the following window appears, type in the SSID and password for the FlashAir™.



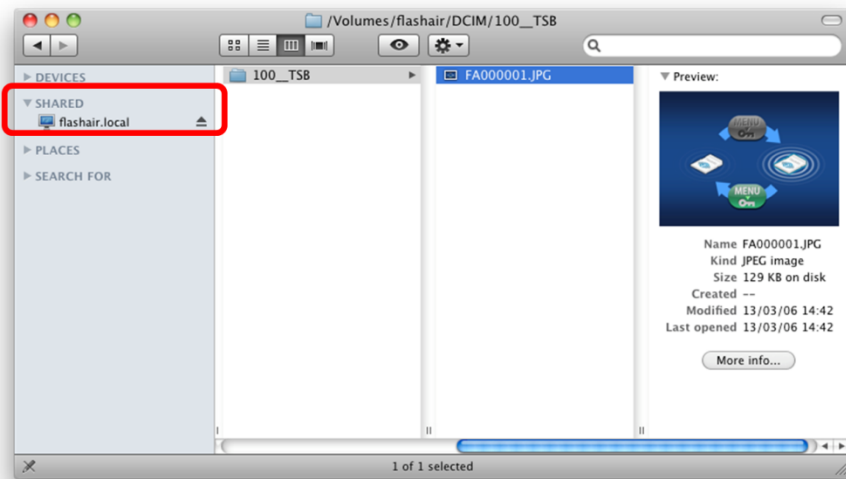
\*Setting FlashAir™ drive may take a few minutes.

#### Step4

After the setting is completed, please confirm that your computer is connected to the FlashAir™ via Wi-Fi. And then a click on the "Connect to FlashAir" on "FlashAirDrive.app" opens Finder and brings up FlashAir™ on the SHARED folder.

To save photos or files into your computer, select the files you want, then drag and drop them into your computer.

\*You cannot save or delete the files on the FlashAir™ using FlashAir™ drive function from your computer.



\*Windows<sup>®</sup> is an either registered trademark or trademark of Microsoft Corporation in the United States and/or other countries.

\*Mac OS and Finder are trademarks of Apple Inc.