

# FlashAir™ Configuration Software

## User's Manual

(Windows)

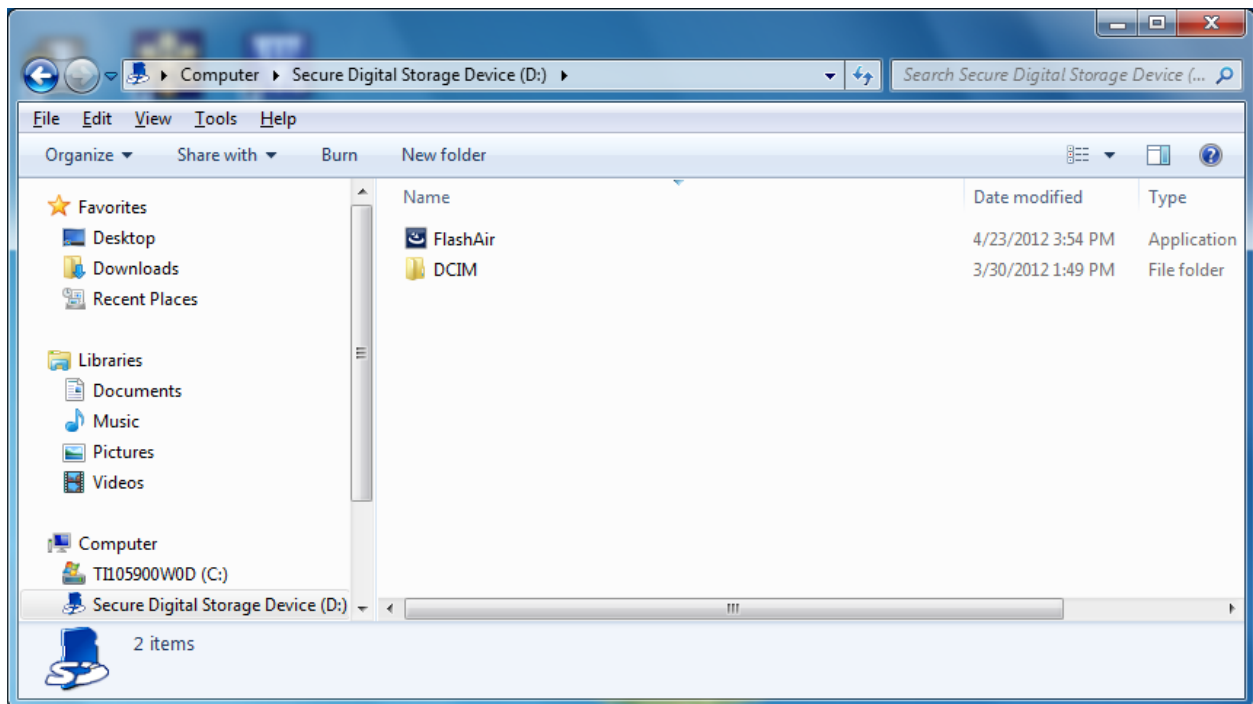
Revision 2

FlashAir™ Configuration Software (“Software”)

Support OS: Microsoft® Windows® XP SP3/ Windows Vista® SP2 / Windows® 7 (32bit/64bit)

### Software Installation

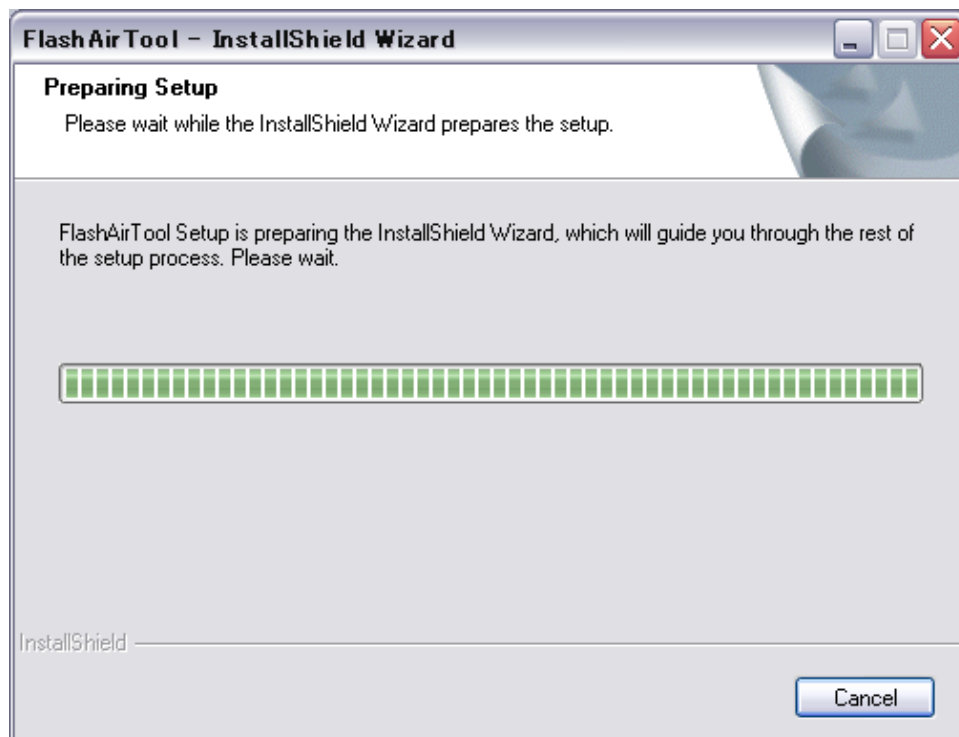
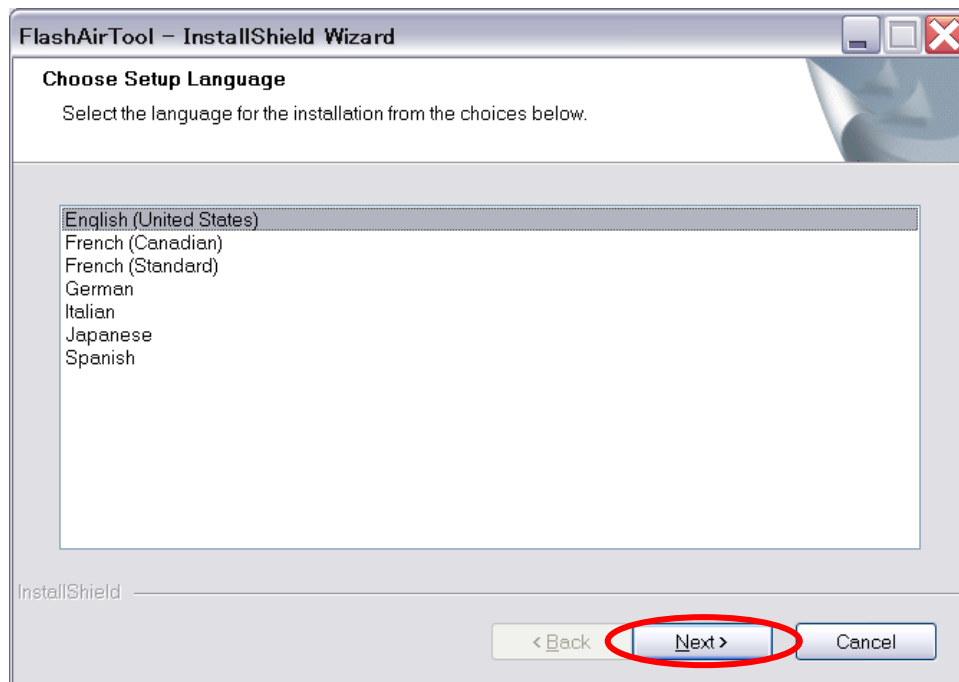
1. Required Operating Systems: Windows® XP / Windows Vista® / Windows® 7
2. Required SD Interface Devices: SD slot on personal computers (“PC”) / USB SD reader  
Please ensure your SD Interface Device is compatible with the SDHC interface.
3. Insert FlashAir™ (“Product”) into SD slot, and go to the Product’s directory.
4. Double-click “FlashAir.exe”, and installer is launched.



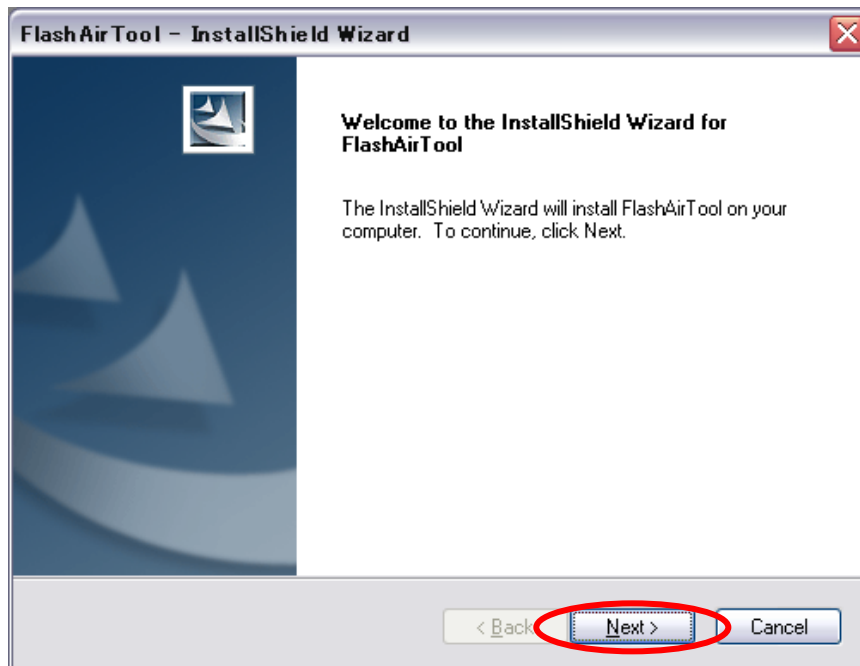
Note: The latest FlashAir configuration software can be downloaded from the website below. Please check the website and use the latest version available.

URL: <http://www.toshiba.co.jp/p-media/wwwsite/flashair.htm>

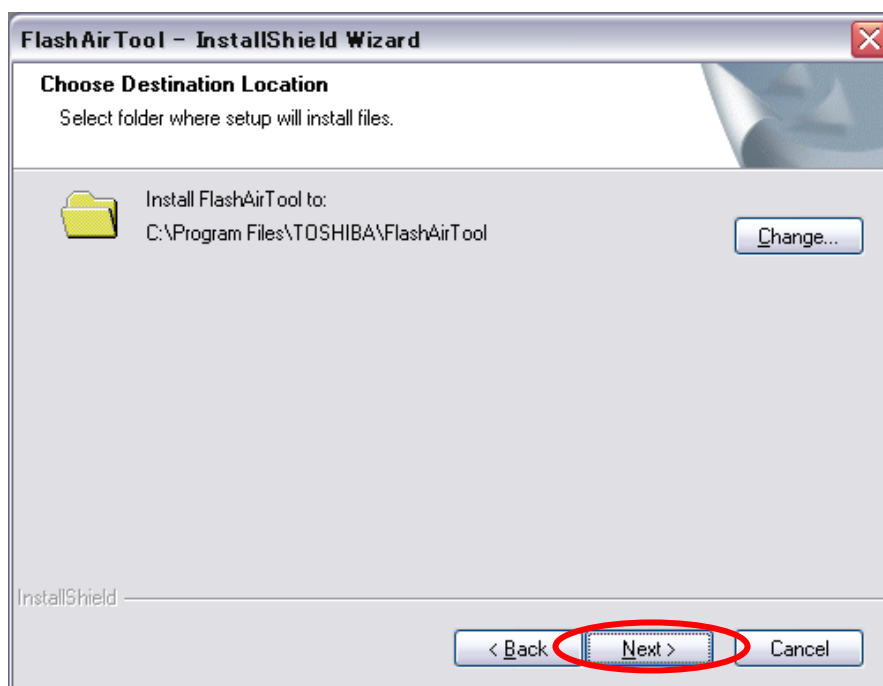
5. Choose the appropriate language and Click “Next >”.



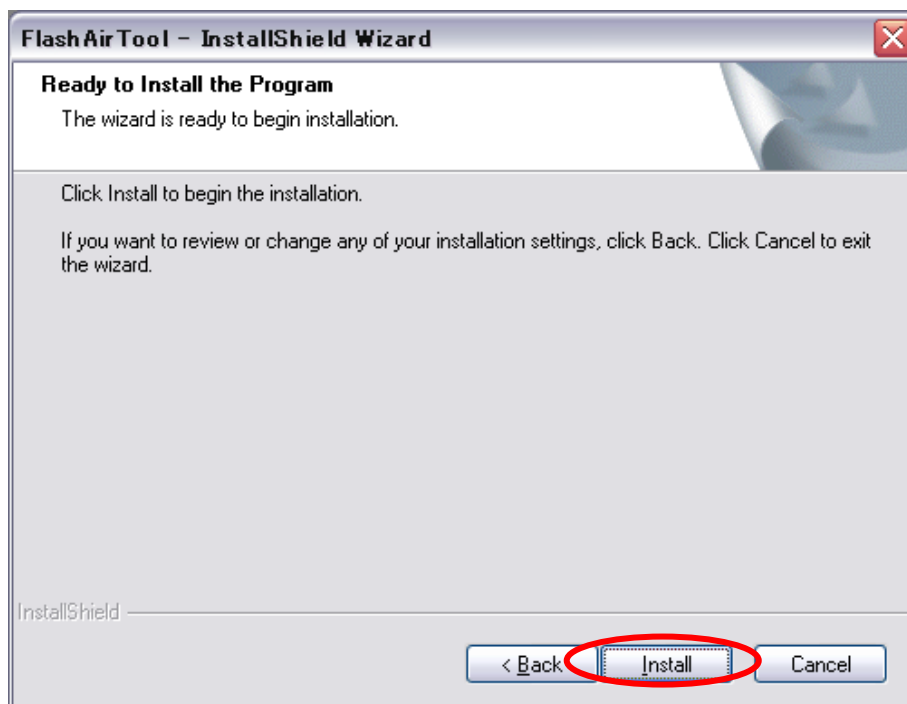
6. After preparation is finished, the screen below will be displayed. Click “Next >”.



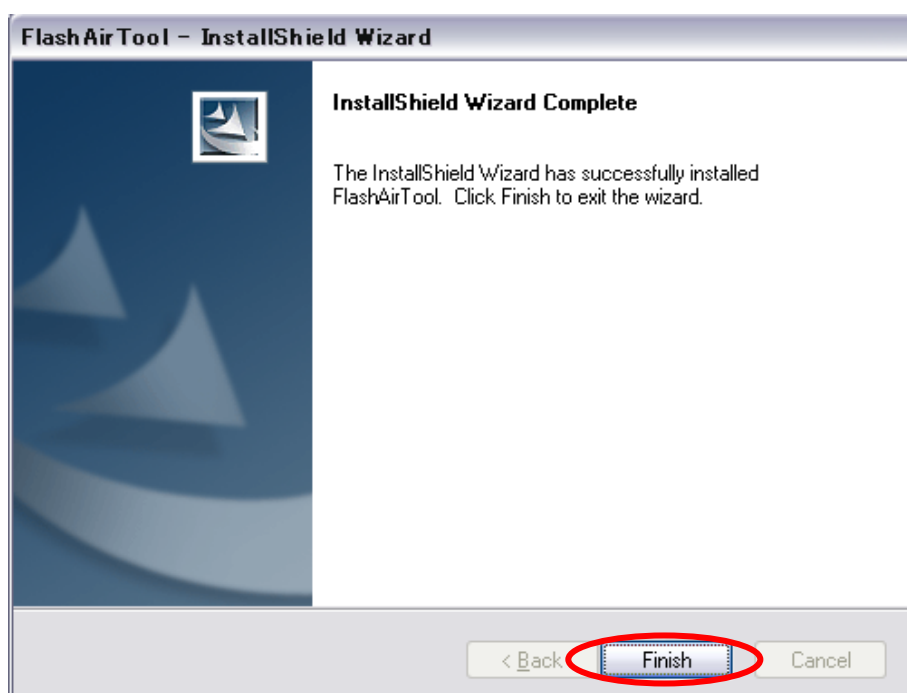
7. Choose Destination location for installing Software and click “Next >”.  
In this manual, the destination location is not changed.



8. Click "Install".



9. After installation is completed, the screen below is displayed. Click "Finish" to complete installation.



10. After the installation is completed, a “FlashAirTool” icon will appear on the desktop of the PC.



This completes the Software installation.

## Operation Procedure

Insert the Product into the SD slot and double-click the “FlashAirTool” icon on the desktop of the PC.  
After the Software starts up, the window below (“Main Window”) is displayed.



### 1. Drive

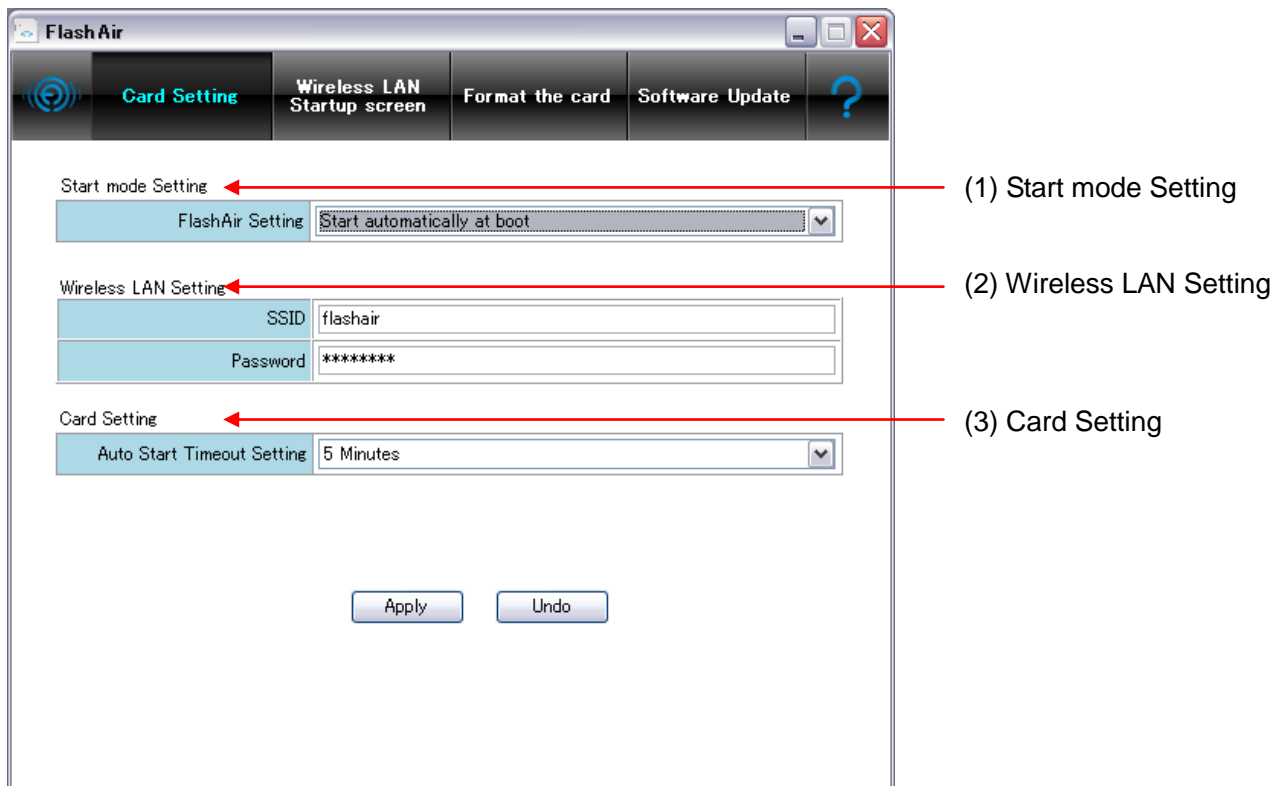
Select the drive in which the Product has been inserted from the pull-down menu before using the Software.

### 2. Home Button

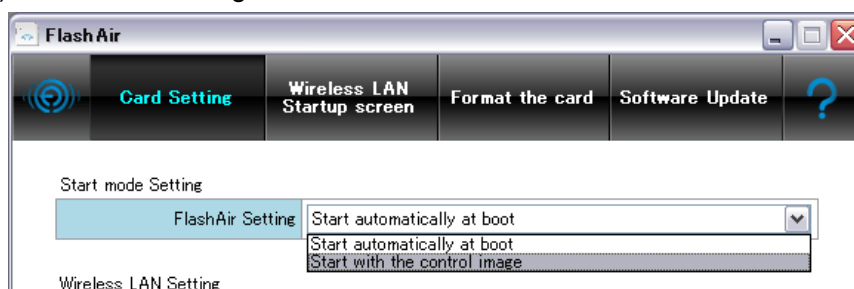
When this button is clicked, the Software returns to the Main Window.

### 3. Card Setting

When the "Card Setting" button is clicked, the screen below is displayed.



#### (1) Start mode Setting



- FlashAir Setting: Start automatically at boot

This mode is set as the default setting.

The wireless LAN functionality of the Product will run automatically when the device which contains the Product is turned on. "SSID" and "Password" setup on this window will be used for the FlashAir Wireless LAN connection.

- FlashAir Setting: Start with the control image



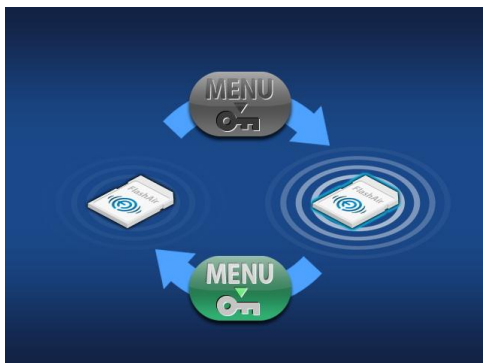
If this mode is selected, the wireless LAN functionality will not run automatically even if the device which contains the Product is turned on.

The on-off operation for the wireless LAN functionality can be controlled by changing the status of the JPEG file "FA000001.JPG" which is pre-written in the Product.

How to control the on-off operation with the digital still camera as an example:

The operation method varies by device. Please review your device manual.

Push "Play" button on the digital still camera and display the image below (FA000001.JPG).



Push the "Menu" button and select "Protect".

When the image above is unprotected, the wireless LAN functionality is turned on.

To turn off the wireless LAN functionality, push "Menu" button and select "Protect" again.

When the digital still camera is turned off, the wireless LAN functionality is also turned off. After this, the wireless LAN functionality will not be turned on automatically when the digital still camera is turned on. In this case, please play the image above again, select "Protect" from the menu, and unprotect the image again to turn on the wireless LAN functionality.

## (2) Wireless LAN Setting

- SSID

This is the input field for the SSID. The SSID is the network name that identifies a device for wireless LAN communications. Please enter up to 32 alphanumeric characters in the field.

- Password

This is the input field for the security key. The security key should have 8 to 63 alphanumeric characters. Encryption mode is WPA2. If the field is blank, the Product is lax on security. Users should take appropriate security measures to prevent from hacking or stealing data transmitted wirelessly by third parties. Do not use easy-to-guess passwords and please select a strong password. Toshiba recommends you to make a note of your SSID and security key.

## (3) Card Setting

If there is no connection from a device (e.g. Smartphone) within a predetermined amount of time (which is set with this setting), the wireless LAN functionality will be automatically turned off. This results in the Product working as a normal SDHC memory card only.

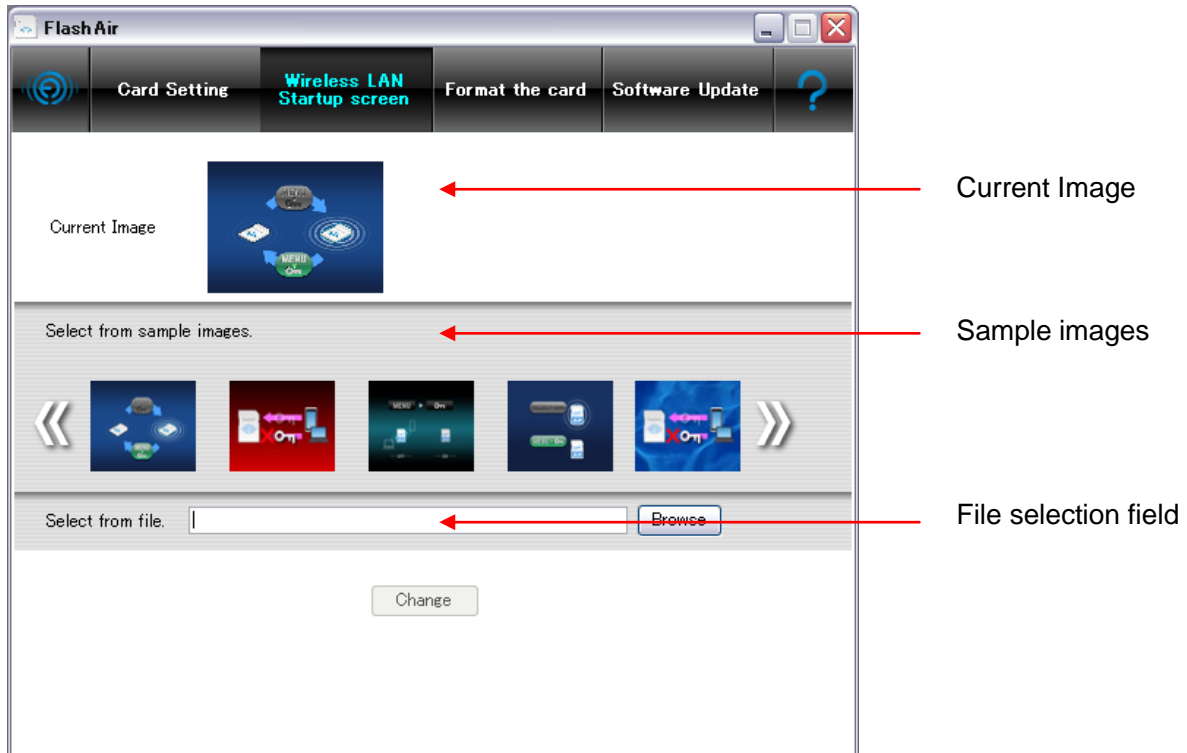
In addition, after a predetermined amount of time has passed after disconnection from a device, the

wireless LAN functionality will be automatically turned off. This results in the Product working as a normal SDHC memory card only.

Please click “Apply” to save the Card Setting.

#### 4. Wireless LAN Startup screen

You can select an image for the Wireless LAN Startup screen when you set the “Start mode Setting” as “Start with control image”.



Six sample images, which are preloaded, or any image, can be set as the Wireless LAN Startup screen. Click an image from the samples and click “Change” and “Current Image” will be changed to the selected image.

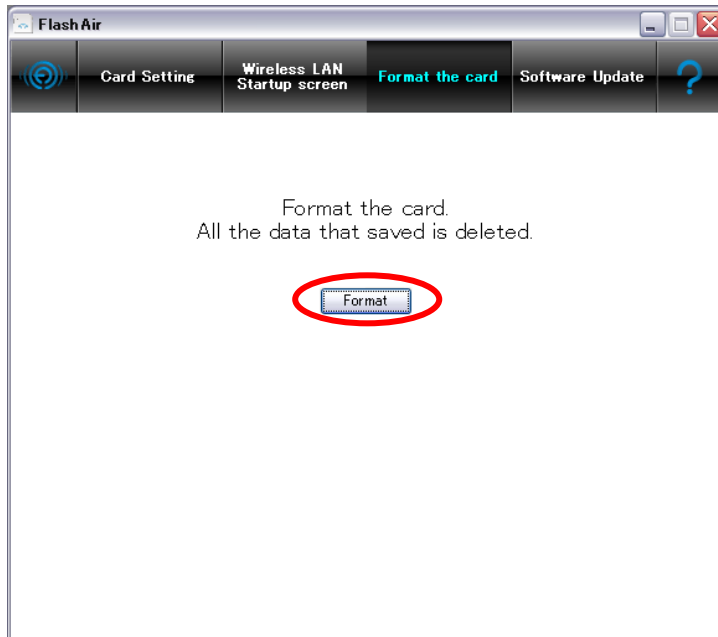
If you wish to select another image you prefer, click the “Browse” button and open the image. The selected file name is displayed in the File selection field. Click “Change” and the “Current Image” will be changed to the selected image.

## 5. Format the Card

This feature is to format the Product and reset it to the factory default.

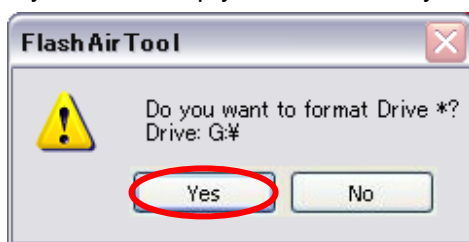
This feature may cause all the data and initial settings stored in the Product to be lost. Back up your data on multiple types of storage media before using this feature. Initial setup of the Product is required again after formatting.

Click the “Format” button.

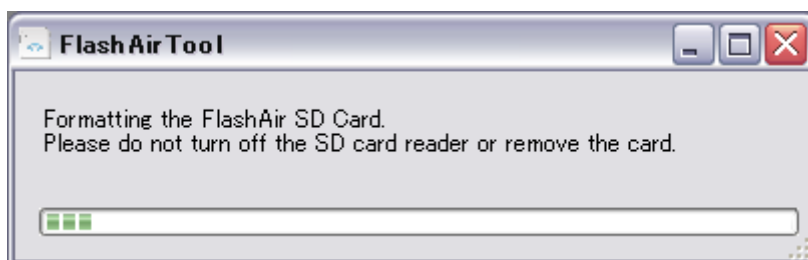


Please make sure once again you have a backup of your card's content prior to proceeding with the reformat process.

If you backed up your data already, click “Yes(Y)”.



Then, formatting is started.



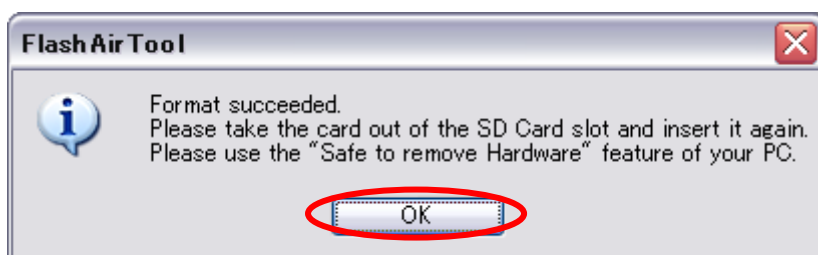
While the window below is displayed, the Product is being reset to the factory default.



After formatting is completed, the window below will be displayed.

Follow the instructions in this window, take out the Product from SD slot and insert it again.

Then click "OK".



Now, the Product is reset to the factory default.

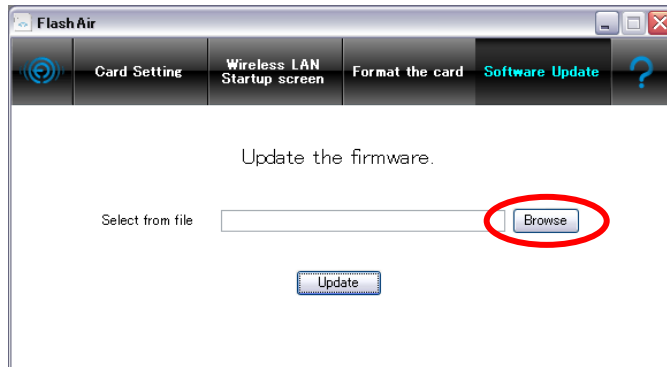
## 6. Software Update

This feature is to update the software of the Product.

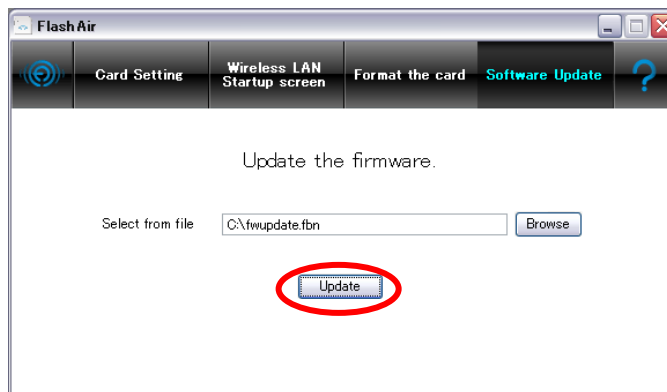
Download the latest version of the software from the website

(<http://www.toshiba.co.jp/p-media/wwwsite/flashair.htm>) and store it to your PC.

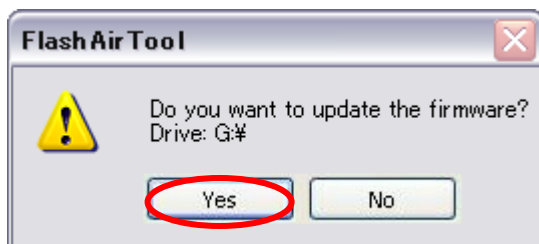
Click "Browse" and select the stored file.



After selecting the stored file, click the "Update" button.



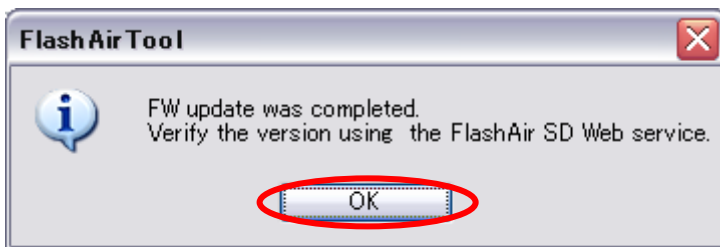
When the below window is displayed, click "Yes(Y)".



When the window below is displayed, take out the Product from the SD slot. Then insert the Product in the SD slot again after five (5) seconds, and click "OK". The Progress window will be displayed when the software updating has started.



When the software updating has completed, the window below will be displayed. Please click "OK".



This will complete the software update.

## 7. Online manual

When this button is clicked, the online manual for the Product is opened in your browser.

\* Windows®, Windows Vista® are registered trademarks of Microsoft Corporation in the United States and other countries.

\* SDHC Logo is a trademark of SD-3C, LLC.

\* FlashAir is a trademark of Toshiba Corporation.

\* All other company/product names may be registered trademarks of their respective companies.

\* Copyright © 2012 TOSHIBA CORPORATION. All Rights Reserved.