

## How to use internet pass thru mode

※This function is available on the FlashAir™ W-02 series with card software version F19BAW3AW2.00.02 or later.

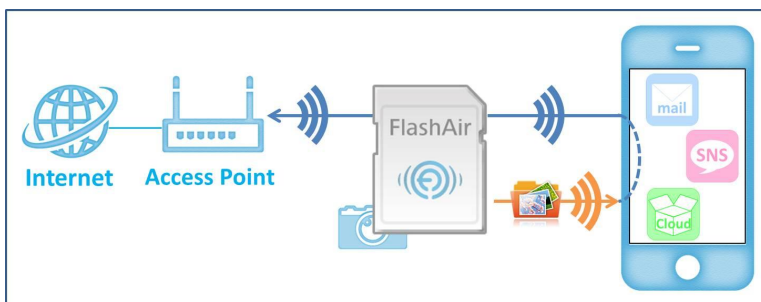
Internet pass thru function enables the Internet connection using other access points through FlashAir™. By connecting to an access point that is connected to Internet, you will have the access to Internet and FlashAir™ at the same time.



○When you are on Internet pass thru mode, you can browse and download the data stored in the FlashAir.



○You do not have to change the network settings of smartphones or other Wi-Fi® capable devices when you upload images downloaded from FlashAir™ to SNS.



○You can browse the web site on the Internet with your device is connected to FlashAir.



To use Internet pass thru mode please set up the Product in one of the following ways.

1. Setting up the Internet pass thru mode using Apps for smartphones and tablets.

※You can set up in this way only on the Wi-Fi device (e.g. the smartphone) used for the initial settings.

(1) Insert the Product into a device (e.g. a digital camera) which is compatible with SDHC memory cards.

(2) Turn on the device. The wireless LAN functionality of the Product starts automatically.

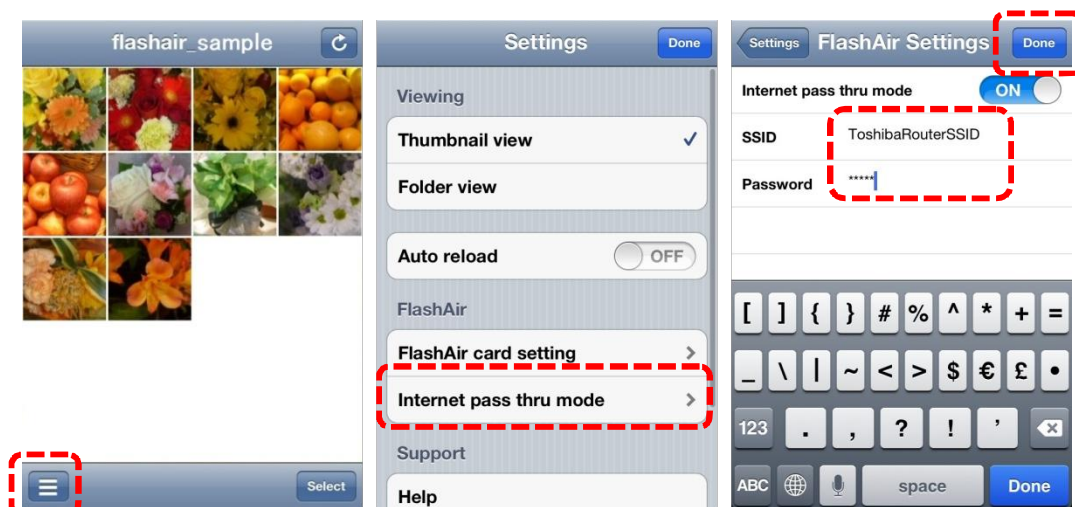
(3) For iPhone®/iPad®, it is necessary to select Wi-Fi network connection to the Product, before opening the App. Activate the Wi-Fi feature of the iPhone®/iPad® and connect to the Product. After that, open the FlashAir™ App.



\* Screen elements and user guides vary depending on the device being used. For details, refer to the manual of each device.

For Android devices, open the FlashAir™ App. And connect to the Product using app.

(4) In “Internet pass thru mode” found under “Settings” menu of the FlashAir™ App, turn “Internet pass thru mode” on and enter the SSID of the access point in the SSID field and the password of the access point in the Password field. Then, click the “Done” button.



These figures show the screen images for iPhone®.

## 2. Setting up the Internet pass thru mode on a personal computer\*

\* OS: Windows® XP, Windows Vista®, Windows® 7, Windows® 8, or Mac OS® X (v10.6.8 or later)

(1) Start the FlashAir™ configuration software (Ver.2.02 or later) and click on “Network Settings”.



(2) Check "Enable "internet pass thru mode"" check box to enable Internet pass thru mode. And enter the SSID and password of the access point FlashAir will connect to into the “Access Point SSID” field and “Access Point Password” field. Click “Apply” button to apply the settings.

