

**How to browse the data stored in the Product using the Wireless LAN functionality
(wireless data transfer function)**

This function allows you to browse and download data from the device (e.g. a digital camera) to smartphones, tablet computers or computers while the Product is still inside the device.

1. How to browse data

- (1) Insert the Product into a device (e.g. a digital camera) which is compatible with SDHC memory cards.
- (2) Turn on the device. The wireless LAN functionality of the Product starts automatically.
- (3) Activate the Wi-Fi feature of a device (e.g. a smartphone). The name of the wireless LAN network which you set in the initial settings is displayed. Choose that network and enter the new password if required.
- (4) After the connection between the Product and the device (e.g. the smartphone), open the browser of the device. The browser of the device automatically goes to:

<http://flashair/>

If it does not go there automatically, click the refresh button of the browser. The screen may not refresh even if you click the refresh button. If this happens, type the above address into the address bar to go there.

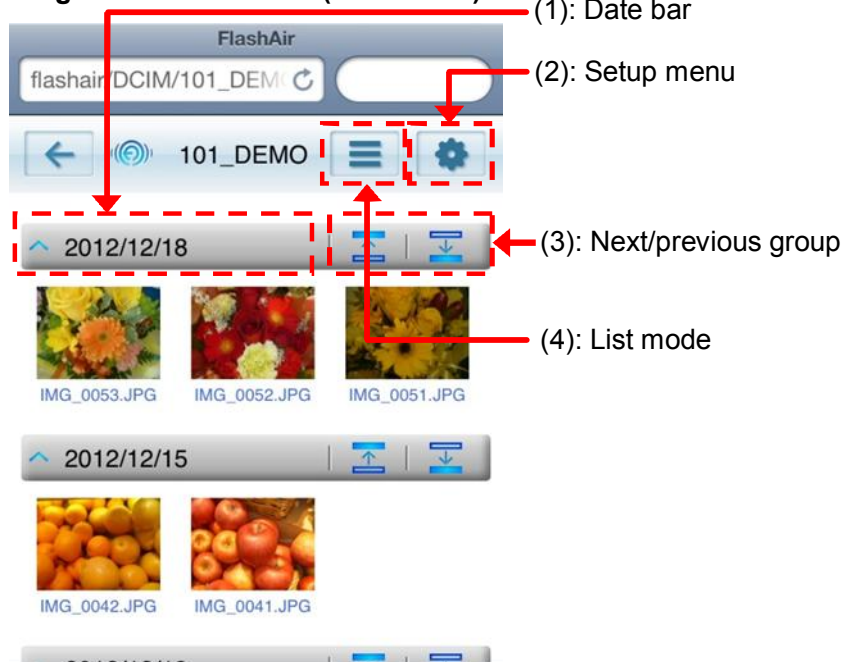
- (5) Files and folders stored in the Product are displayed in the browser (Fig. 8 and Fig.9).

If you select a folder, the contents of the folder will be displayed. Photos taken with the digital cameras are typically stored in folders in the DCIM folder.

If you select a thumbnail of a photo, the photo will be displayed in full-screen (Fig. 10).

Refer to sections 3 and 4 about the buttons in the figures.

Fig. 8: File list screen (Icon mode)



Switch
icon mode / list mode

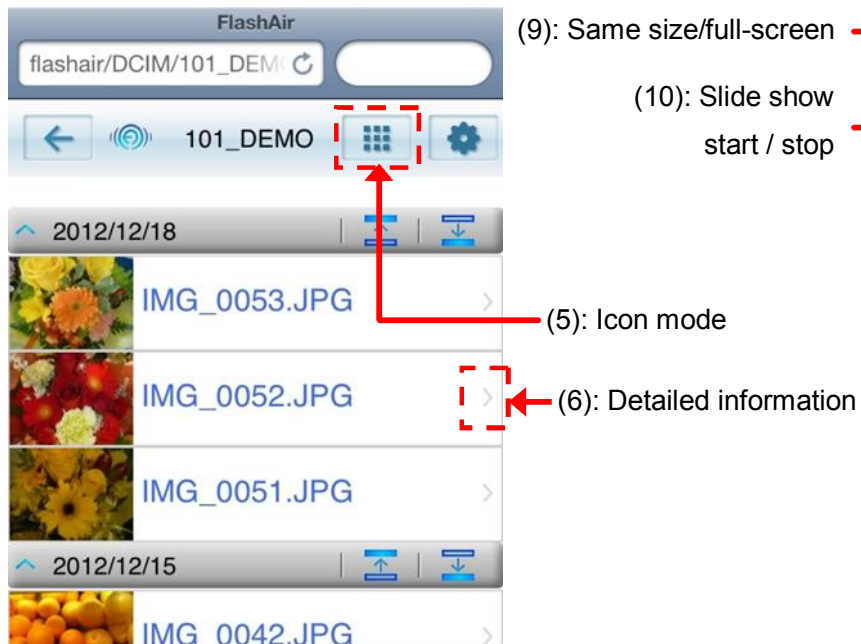


Fig. 9: File list screen (List mode)

(7): Thumbnail display
(8): Wireless LAN stop



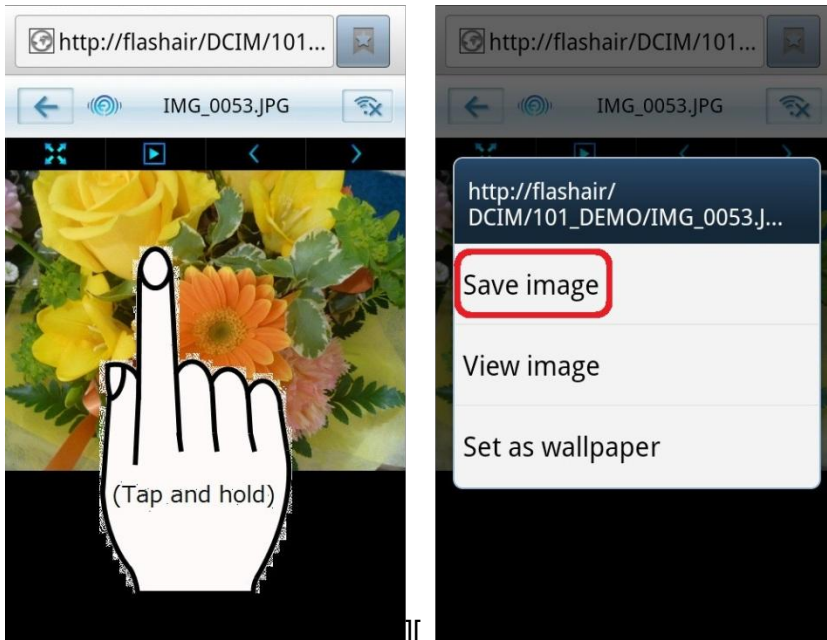
Fig. 10: Image display screen

2. How to save files

* Operating procedures may vary as device operating systems are updated. Refer to the instructions for your device.

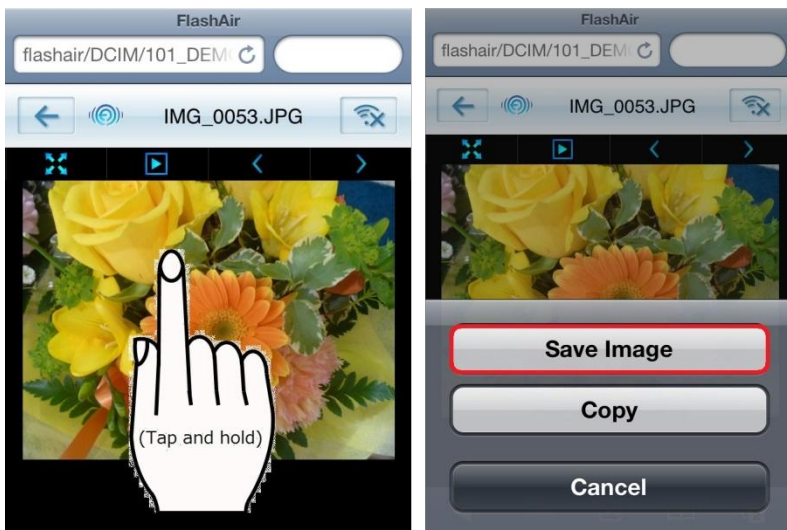
- Android devices: Tap and hold the file. Tap “Save image” on a pop-up option list to start downloading a file.

Fig. 11 Example of the “Save Image” menu in an Android smartphone



- iPhone/iPad: Tap and hold the file. Tap “Save Image” to start downloading a file.

Fig. 12 Example of the “Save Image” menu in an iPhone



- Computer: Place the pointer on the file and right-click to open a pop-up menu. Click “Save Picture As...” or “Save Target As” to start downloading a file.

3. Functions in the file list screen

Files and folders stored in the Product are displayed in the file list screen. When the number of files and folders exceeds 20, the file lists is displayed grouped by day. There are two display modes, one is icon mode (Fig. 8) and the other is list mode (Fig. 9), in the file list screen.

- Switch icon mode and list mode

When (4) or (5) is pushed, you can change the display mode to list mode or icon mode.

- Display/hide folders and files in a group

When the date bar (1) is pushed, the folders and the files in the group can be hidden.

When the date bar (1) is pushed again, the folders and the files in the group are redisplayed.

- Move next/previous group

When (3) on the date bar is pushed, you can move to the next/previous group.

- Detailed information display

When (6) is pushed in the list mode, detailed information about the file or the folder is displayed.

4. Functions in the image display screen

If you select a thumbnail of a photo, you can display it in full-screen. In the image display screen, there are two display modes, the full-screen and the same-size modes.

- Switch full-screen mode and same-size mode

When (9) is pushed, you can display images in same-size mode.

When (9) is pushed in the same-size mode, you can return to the full-screen mode.

- Display next/previous photo

When (11) or (12) is pushed, you can see the next or the previous photo.

- Slide show

When (10) is pushed, a slide show will start. The photos will be switched every 15 seconds. When (10) is pushed during a slide show, the slide show stops.

- Stop the wireless LAN functionality

When (8) is pushed, the wireless LAN functionality of the Product stops. If you want to re-start the wireless LAN functionality, turn off and on the device in which the product is inserted.