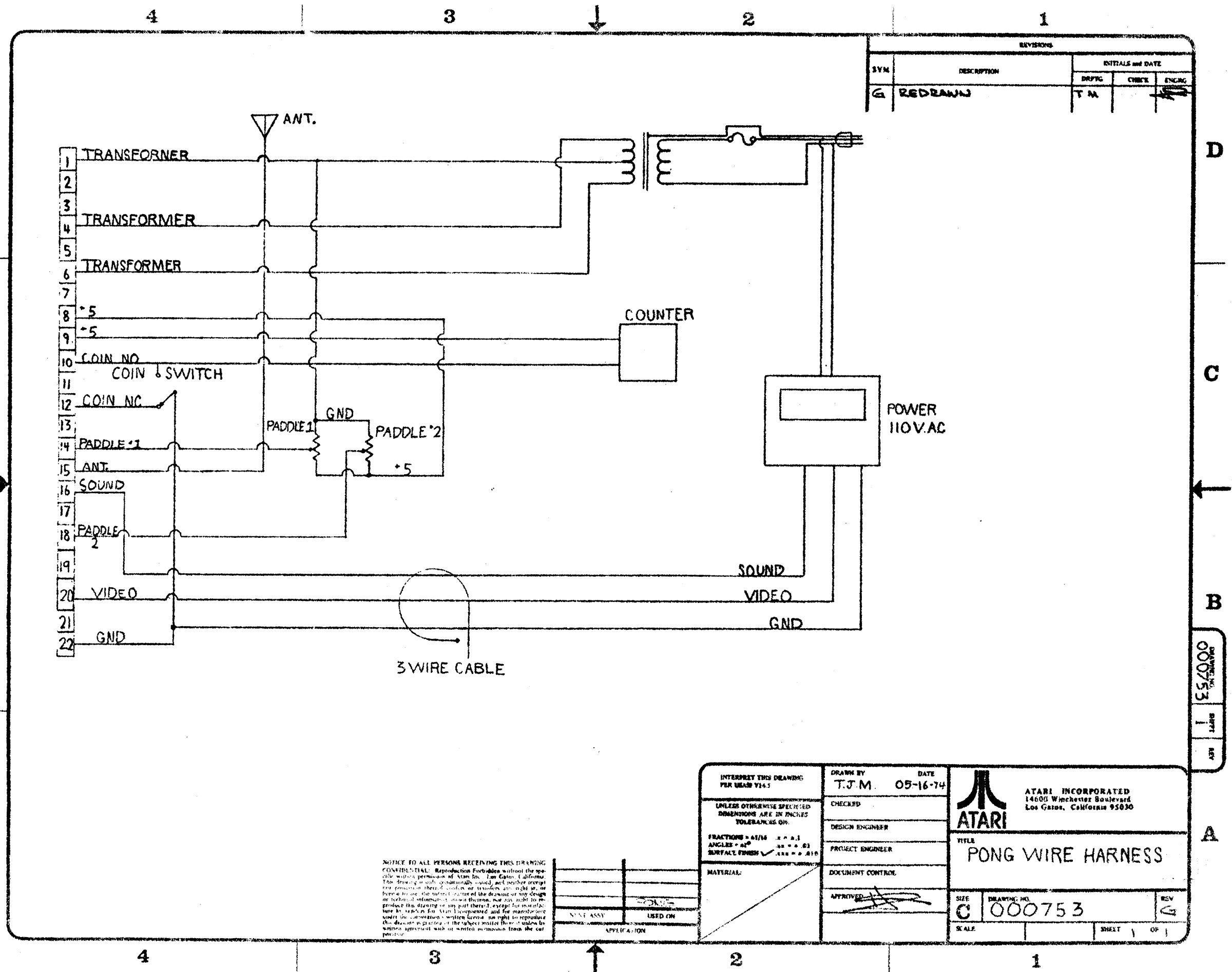
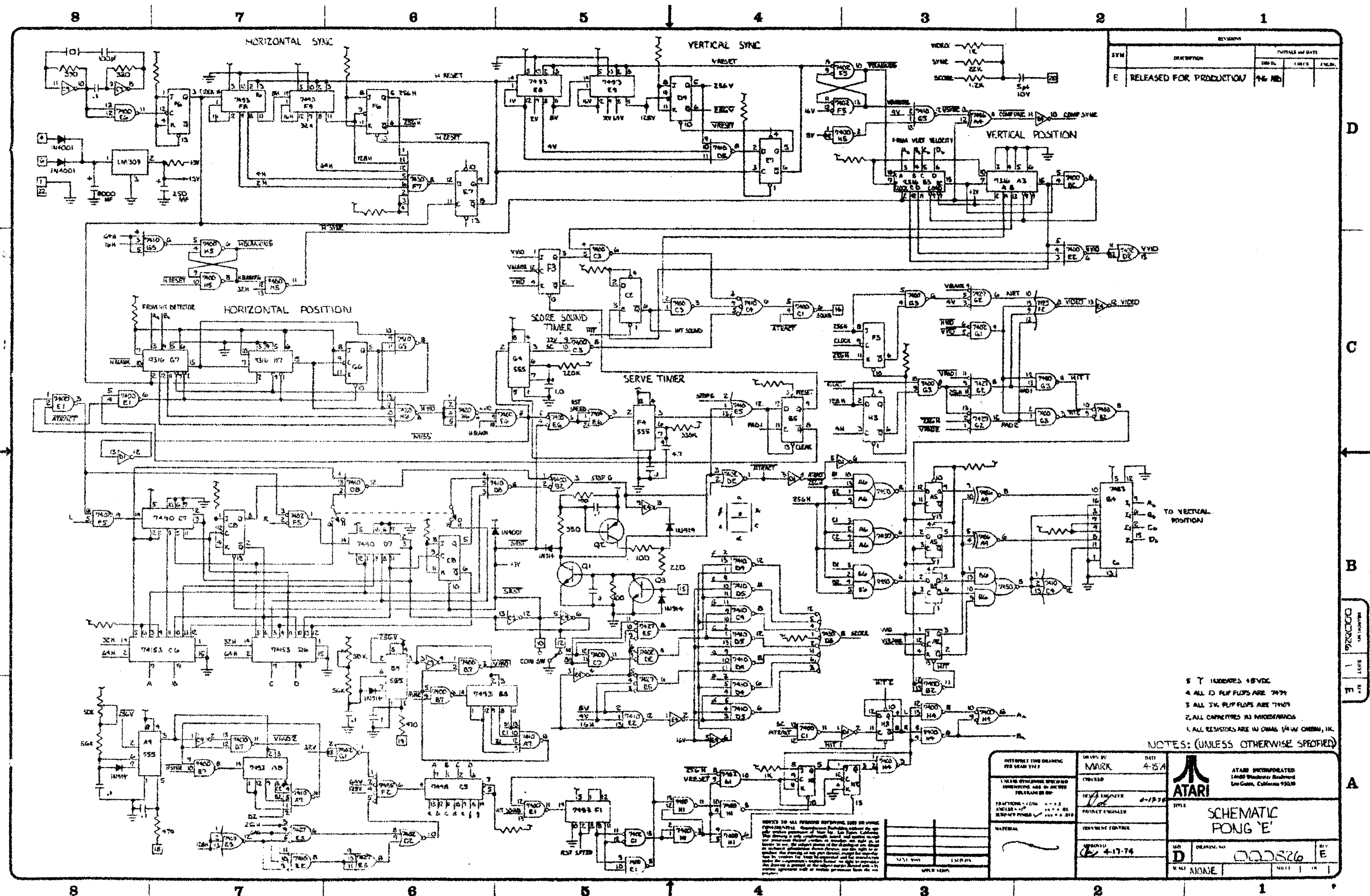
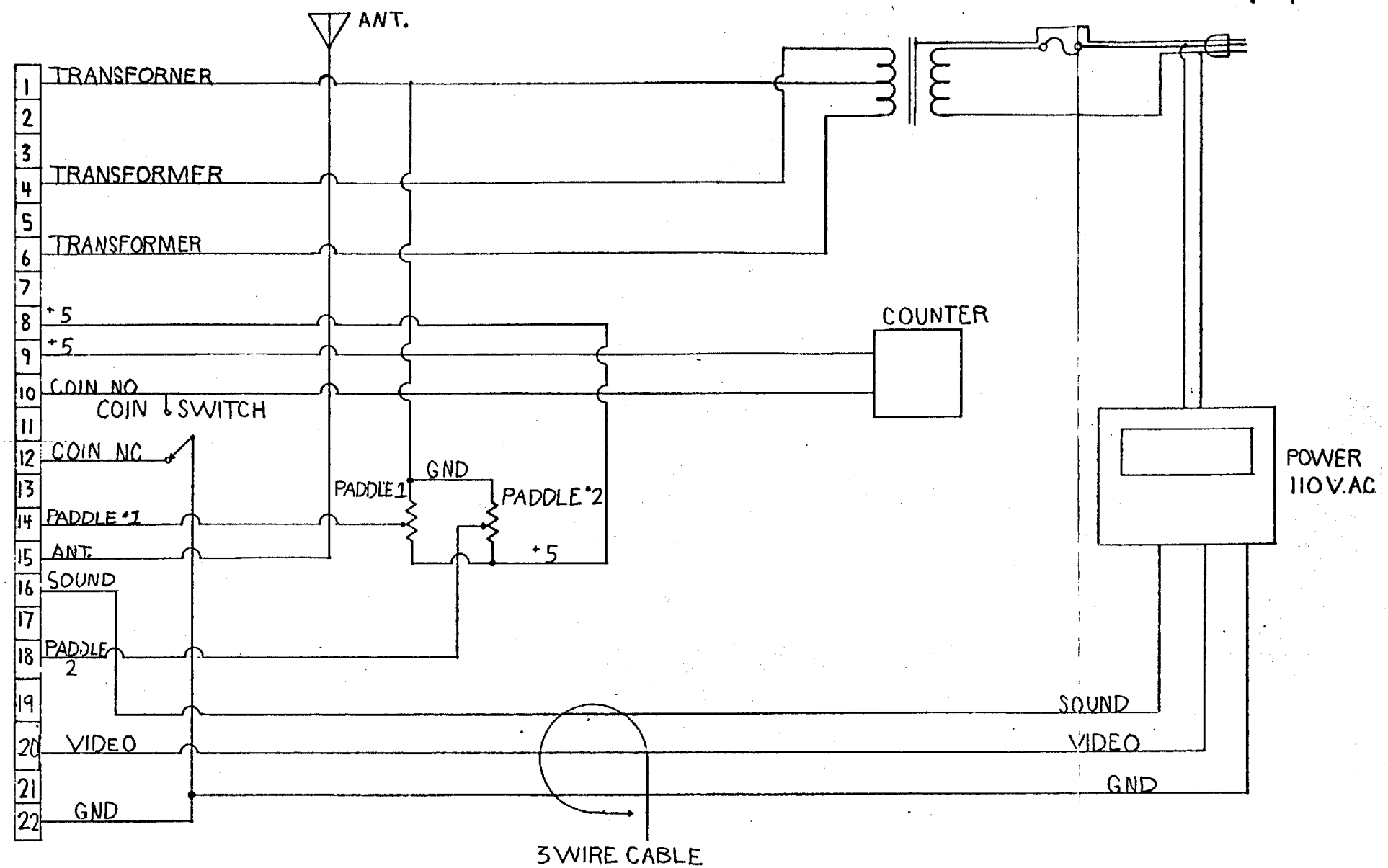

$$1 = \frac{1}{2} \left( 1 + \frac{1}{2} \right) = \frac{3}{4}$$








REVISIONS				
SYM	DESCRIPTION	INITIALS and DATE		
		DRFTG	CHECK	ENG:RG
G	REDRAWN	T M		<del>AM</del>

D  
C  
B  
A

DRAWING NO. 000753  
SHEET 1  
REV

INTERPRET THIS DRAWING PER USAS: Y14.5  UNLESS OTHERWISE SPECIFIED DIMENSIONS ARE IN INCHES TOLERANCES ON:  FRACTIONS = 1/16 .X = .1 ANGLES = 45° .XX = .03 SURFACE FINISH ✓ .XXX = .010  MATERIAL:  NEXT ASSY USED ON APPLICATION	DRAWN BY T.J.M. DATE 05-16-74	 ATARI INCORPORATED 14600 Winchester Boulevard Los Gatos, California 95030  TITLE PONG WIRE HARNESS	
	CHECKED		DESIGN ENGINEER
	PROJECT ENGINEER		DOCUMENT CONTROL M.J.
	APPROVED		
	SIZE C DRAWING NO. 000753 REV G		

SCALE SHEET 1 OF 1

